

spire RANGES

MILITARY

LAW ENFORCEMENT

COMMERCIAL

A person wearing a tactical mask and vest is aiming a rifle in a training facility. The background shows a target with a green bullseye and a silhouette target with the number 5. The text "TRAIN THE BEST™" is overlaid on the image.

TRAIN THE BEST™

Our customers are the heroes who make our world, countries and communities safer. At Spire, we create exceptional shooting range systems that prepare them for when duty calls.

Our mission?

EVERY HERO COMES HOME SAFE.





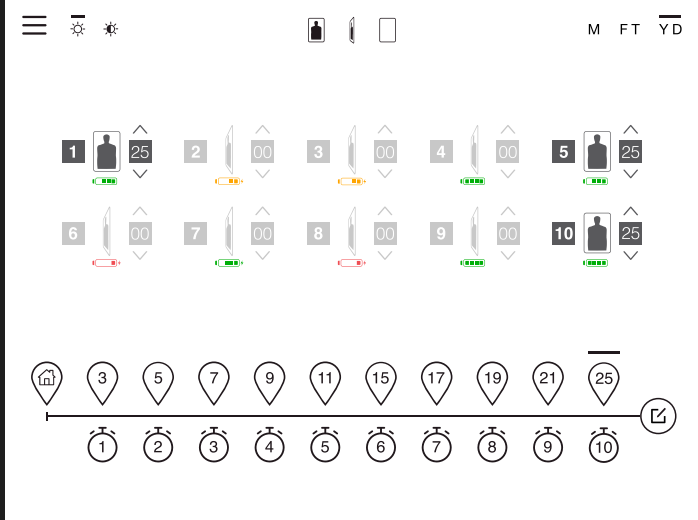
CONTENTS



INTRODUCTION	<<
OUR MISSION	3
TABLE OF CONTENTS	5
RANGE CONTROLS	<<
SpireOS MASTER	9
SpireOS LOCAL	11
SpirePLAY	13
QUICK PRODUCT SUMMARY	<<
COMMAND SERIES	15
HALIFAX SERIES	16
RETRIEVER SYSTEMS	<<
URBAN	17
RECON	21
TURNING TARGET SYSTEMS	<<
STRYKER	25
FURY	29
BRIDGER	33
MOVING TARGET SYSTEM	<<
TREADWELL	37
SHOOTING BOOTHS	<<
TRUMBULL	41
BULLET TRAPS	<<
BLACKOUT	45
HELIX	49
BAFFLES	<<
WELKIN	53
CONTACT	<<
CONTACT INFO	57



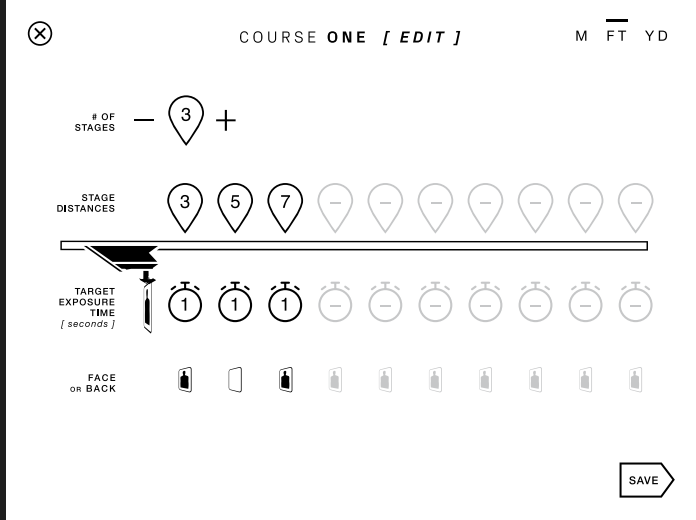




COMPLETE RANGE CONTROL



CLEAN & MODERN



CREATE & EDIT COURSES

spireOS MASTER CONTROL >>

SpireOS Master Control powerfully condenses your range into a modern, intuitive, 15-inch touchscreen display. Compatible with optional wireless remote and tablet, you have total control of all lanes across multiple bays from the control room or the firing line.



IMMERSIVE 15" INDUSTRIAL TOUCHSCREEN DISPLAY



MIRRORED DISPLAY TABLET INTERFACE



PROGRAMMED TO YOUR RANGE SPECS



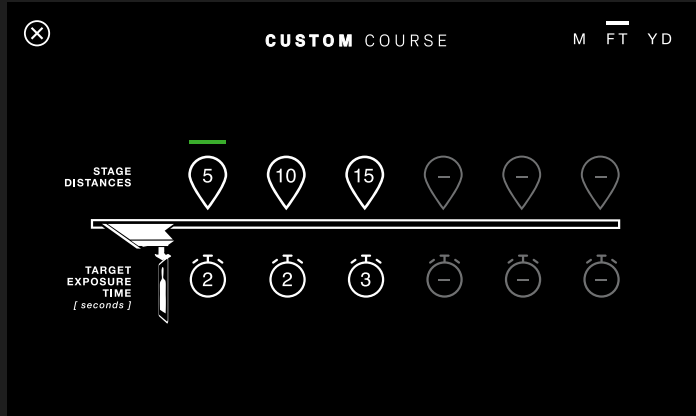
OPTIONAL VENTILATION & LIGHTING CONTROL



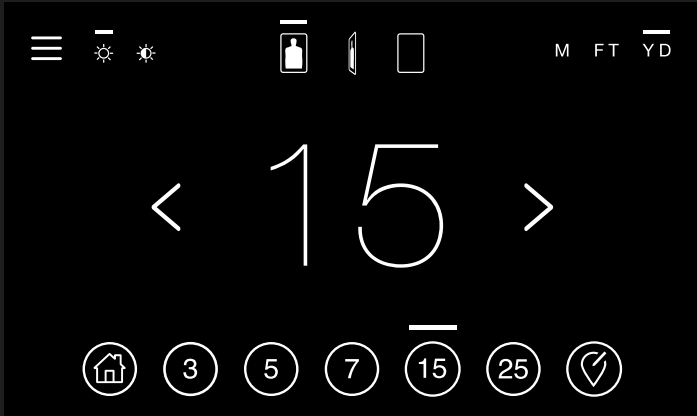
OPTIONAL INTEGRATED TELECOM SYSTEM

WIRELESS ONSITE TABLET CONTROL

FINGERPRINT & GLARE RESISTANT TOUCHSCREEN



CUSTOMIZE YOUR TRAINING



QUICK PRESETS



SIMPLE NAV MENU



FINGERPRINT & GLARE
RESISTANT SCREEN

spireOS LOCAL CONTROL >>

Finally a range control experience that doesn't feel like dial-up internet. From the user-friendly design to the pre-loaded qualification courses and games, our 7-inch touchscreens present a better user experience. Welcome to modern and intuitive.



EASY ON THE EYES
7" BLACK SCREEN



SIMPLE USER
CUSTOMIZATION



MOUNTS DIRECTLY
TO SHOOTING STALLS



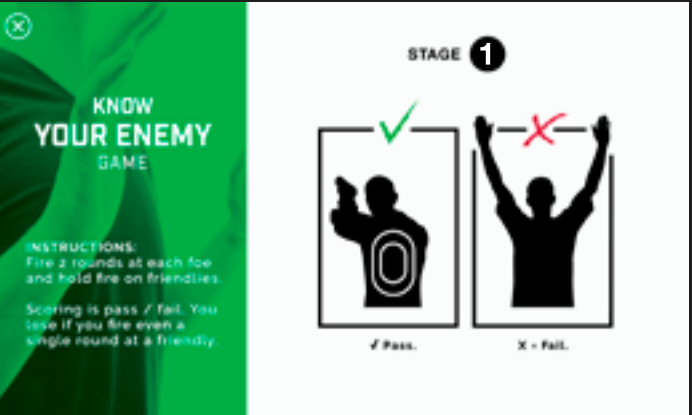
HEAVY DUTY
STEEL HOUSING



CHOOSE LEVEL OF DIFFICULTY



INSANELY ADDICTIVE GAMES



ON-SCREEN PROMPTS, TIPS & SCORING



Designed for the Command Recon, SpirePLAY's built-in games and courses of fire provide a fun, competitive environment for shooters of all skill levels. Whether you're looking to stay on top of regular firearms training or wanting to survive zombie attack waves, you'll for sure wish you had brought more ammo.



DESIGNED FOR THE
COMMAND RECON



MODERN, INTUITIVE
FAMILIAR DESIGN



FUN FOR ALL
SKILL LEVELS



ADAPTS TO ANY
RANGE'S SPECS



BUILT INTO **spireOS**
LOCAL CONTROL UNIT

COMMAND SERIES

TARGET SYSTEMS

THE URBAN

RETRIEVER

- >> Cable-Driven
- >> Sleek, Minimal Profile
- >> Smooth Multi-Wheel Design
- >> AR500 Protection
- >> Minimized Maintenance
- >> Travels at 10ft/sec

THE RECON

RETRIEVER

- >> 360° Target Turning
- >> Random Edging
- >> 2.4Ghz Wireless Operation
- >> Onboard LiFePO4 Battery & Motors
- >> SpirePLAY Gaming
- >> Built-In Tactical Lighting

THE STRYKER

TURNER

- >> 360° Target Turning
- >> Random Edging
- >> Individual / Synchronized Control
- >> Inverted Configuration
- >> All-Weather Rated
- >> Energy Efficient 24VDC

THE FURY

TURNER

- >> 360° Target Turning
- >> Random Edging
- >> AR500 Protective Shield
- >> All-Weather Rated
- >> Energy Efficient 24VDC
- >> Built-In Tactical Lighting

THE BRIDGER

TURNER

- >> 90° Target Turning
- >> Pneumatic-Powered
- >> AR500 Protective Shield
- >> Fast & Quiet
- >> All-Weather Rated
- >> Optional Thermostat Control

THE TREADWELL

RUNNING MAN

- >> Varying Speed Modes
- >> All-Weather Rated
- >> High Capacity Motor
- >> Easy Addition to Any Range
- >> Upright or Inverted
- >> Dual Run Operation

HALIFAX SERIES

TRAPS & CONTAINMENT

THE HELIX

STEEL TRAP

- >> Reinforced Chamber Design
- >> Easy Spent Lead Collection
- >> Lead Dust Filtration
- >> Low Angle Impact Plates
- >> AR500 Gauge Options
- >> Built for High & Low-Volume Shooting

THE BLACKOUT

RUBBER TRAP

- >> Adaptable to Range Sizes
- >> Recycled Chopped Rubber
- >> Indoor / Outdoor
- >> Minimizes Bullet Breakup
- >> Cost-Conscious Design
- >> Fire Resistant Application

THE TRUMBULL

SHOOTING STALL

- >> Custom Branding & Colors
- >> Solid Core and/or Ballistic Glass
- >> Optional Muzzle Blast Extension, Fold-up or Fixed Table, Lighting, Communications, Storage & Barricade

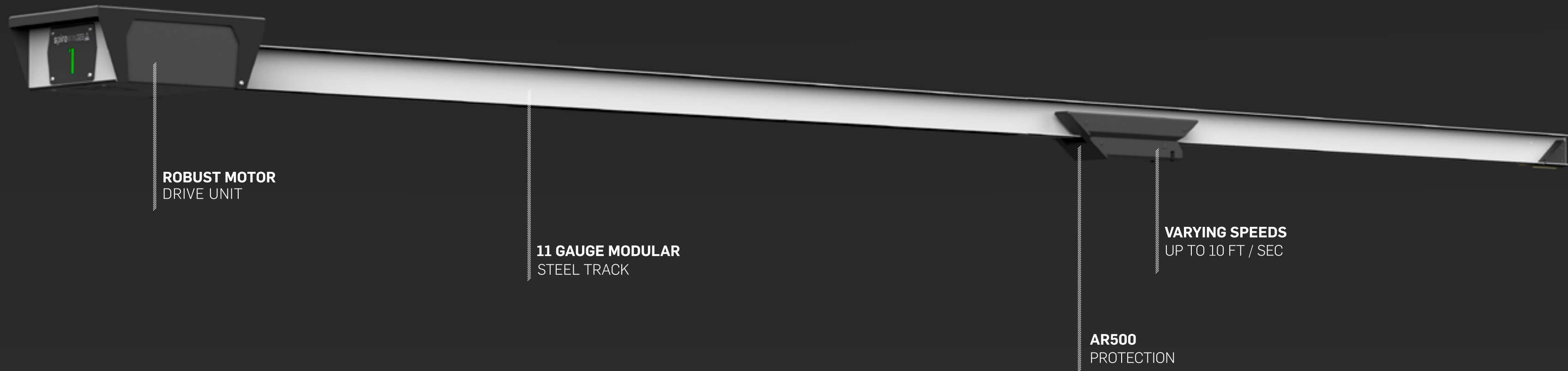
THE WELKIN

BAFFLES

- >> Proprietary Design
- >> New Construction or Retrofit
- >> Optional AR500 Plate Thickness, Fascia, & Acoustics
- >> Indoor / Outdoor
- >> Cost Efficient



THE URBAN >>



ROBUST MOTOR
DRIVE UNIT

11 GAUGE MODULAR
STEEL TRACK

VARYING SPEEDS
UP TO 10 FT / SEC

AR500
PROTECTION

THE URBAN >>

Our not-so-standard target retriever, the Urban was engineered to be legendary. Its purposeful design minimizes cable annoyances, keeping the brass flying without chronic maintenance. While it may not turn targets, it will turn heads.

 **CABLE-DRIVEN**
NON-TURNING RETRIEVER

 **MASTER & LOCAL CONTROL**
W/ SpireOS

 **OPTIONAL WIRELESS**
TABLET CONTROL

 **SMOOTH & QUIET**
MULTI-WHEEL DESIGN



THE **RECON** >>



THE RECON >>

The Recon runs unleashed. Carriers are equipped with a high-torque motor and reliable quick-charge battery for wireless operation free from cables, busbars, and fuss. With its 360° turning, speeds up to 12 feet per second, and all-new SpirePLAY gaming, the Recon is the alpha of indoor range targetry.



THE STRYKER >>





24VDC LOW VOLTAGE
MOTOR

360° TURNING
DOWNRIGGER

AR500
PROTECTION

EASY RELEASE
AR500 TARGET CLAMP



THE STRYKER >>

Suspended behind protective baffles, the Stryker's 360° target-turning features hold the attention of trainees. Targets face and edge rapidly, and random edging plus friend / foe presentation will take your trainees by surprise. Split-second decision making can mean all the difference when duty calls.



FIXED INVERTED
360° TURNER



MASTER CONTROL
W/ SpireOS



OPTIONAL WIRELESS
TABLET CONTROL



ALL-WEATHER
RATED



THE FURY >>



THE FURY >>

A new target training approach that's electric. With its random edging, friend / foe presentation, and integrated tactical lighting, our 360° electric-powered turners qualify shooters for real-life scenarios. Law Enforcement agencies that need more from their target system go with the Fury.



GROUND-MOUNTED
360° TURNER



MASTER CONTROL W/ OPTIONAL
MIRRORED WIRELESS TABLET



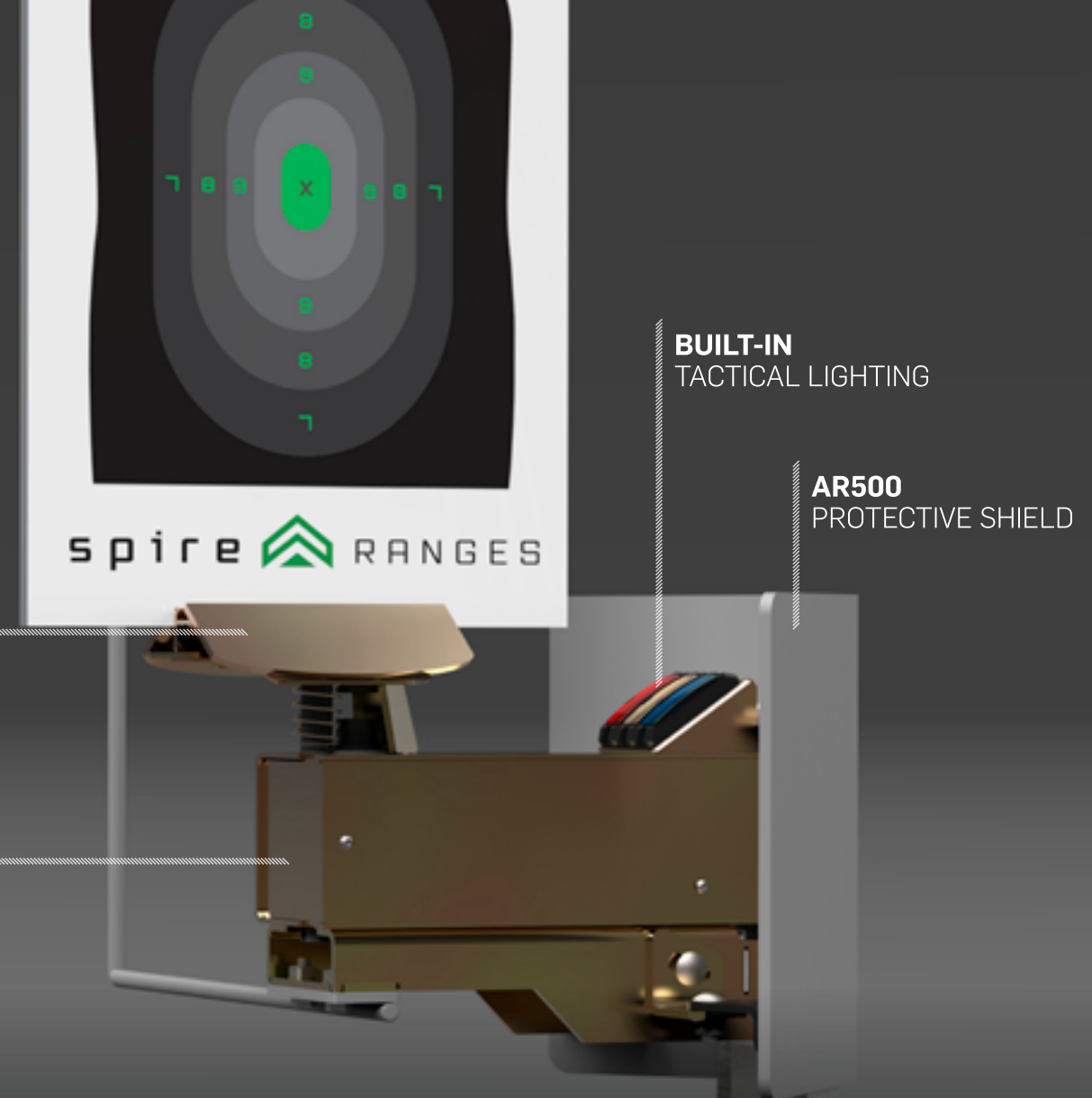
QUICK & EASY
MAINTENANCE



ALL-WEATHER
RATED

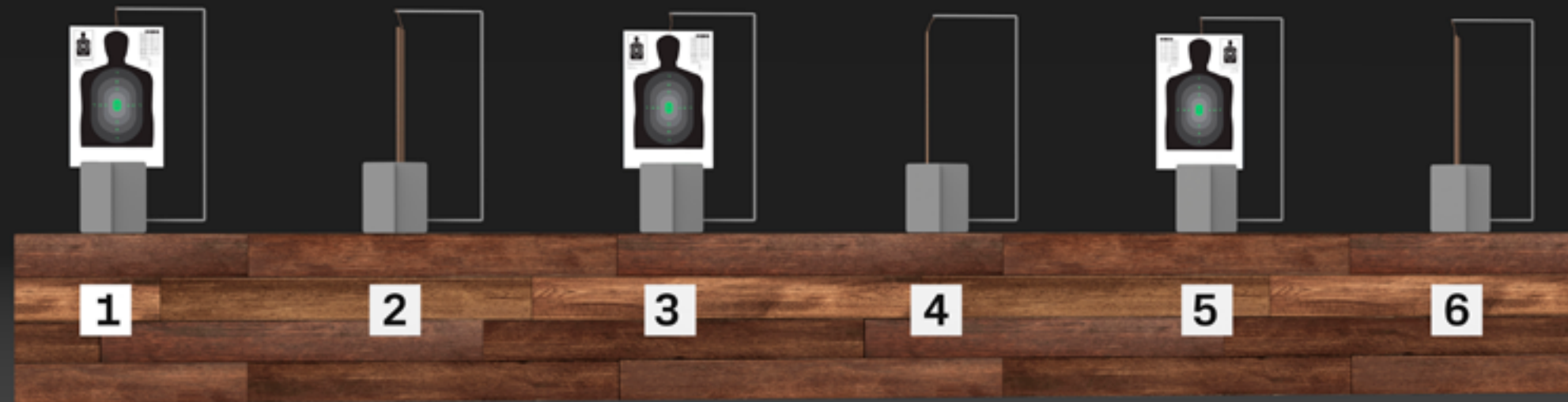
EASY RELEASE
AR500 TARGET CLAMP

24VDC LOW VOLTAGE
MOTOR



THE BRIDGER >>





AR500
PROTECTIVE SHIELD



EASY RELEASE
AR500 TARGET CLAMP

PNEUMATIC
MOTOR

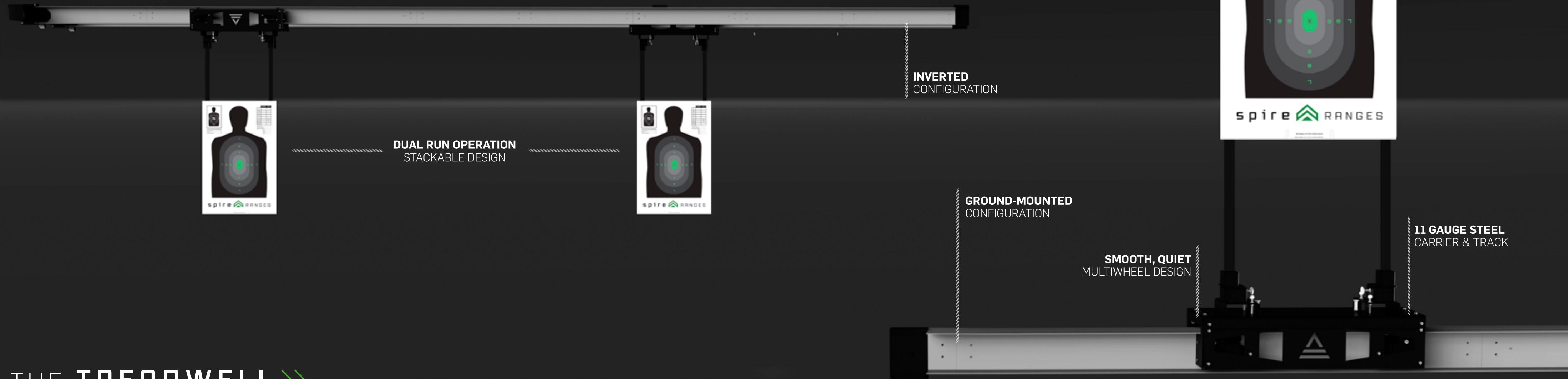
THE BRIDGER >>

Finally, someone put the *new* in pneumatic. This air-powered, whisper-quiet 90° turning target system is deeply grounded in our dedication to state-of-the-art engineering. With optional heated thermostat control for freezing temperatures, the Bridger is battle-tested and proven dependable in all weather and climates.





THE TREADWELL >>



THE TREADWELL >>

The Treadwell is a lateral-moving target system built for forward thinking shooters. Implementing it within your course of fire develops target tracking skills necessary for real life situations. Train smarter with Treadwell.

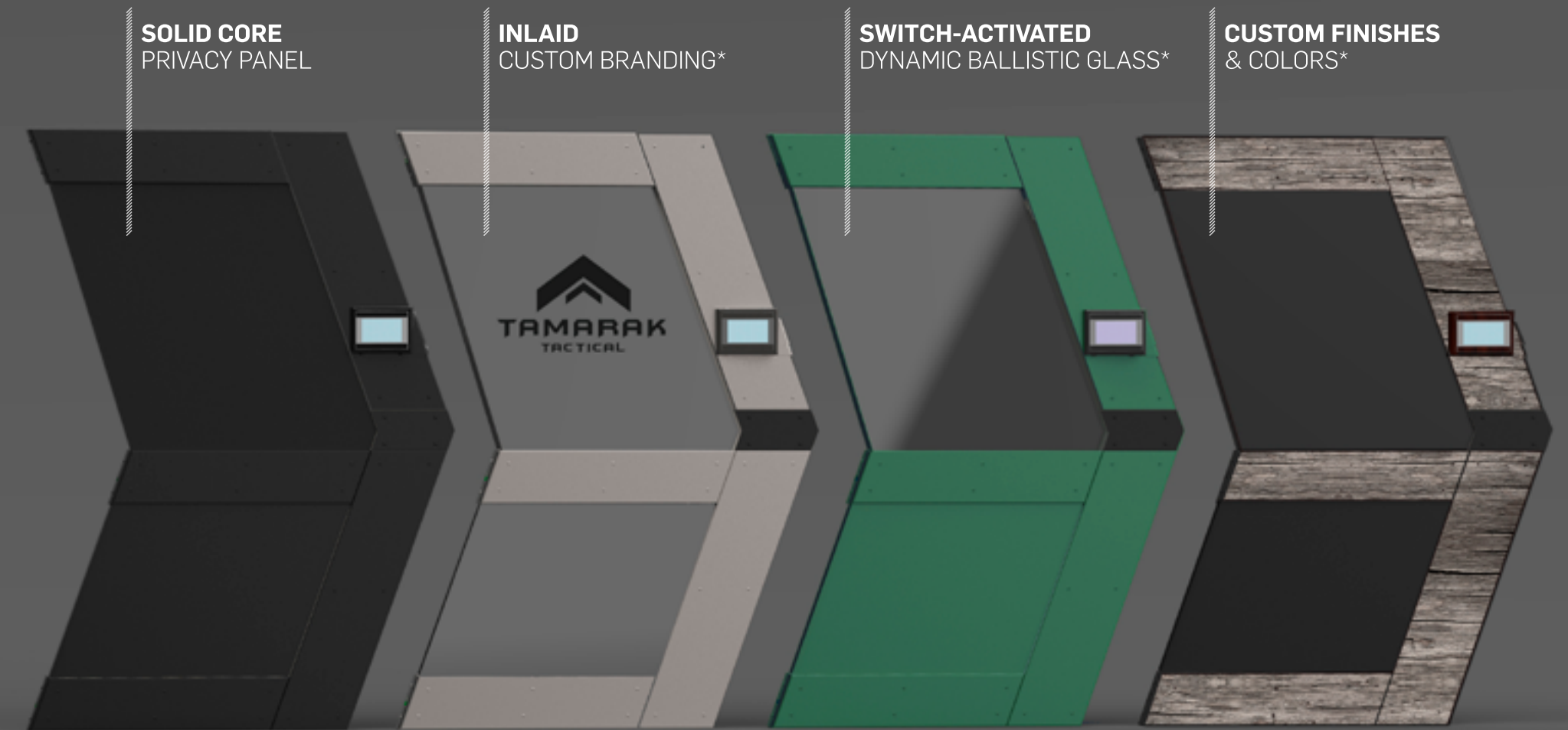
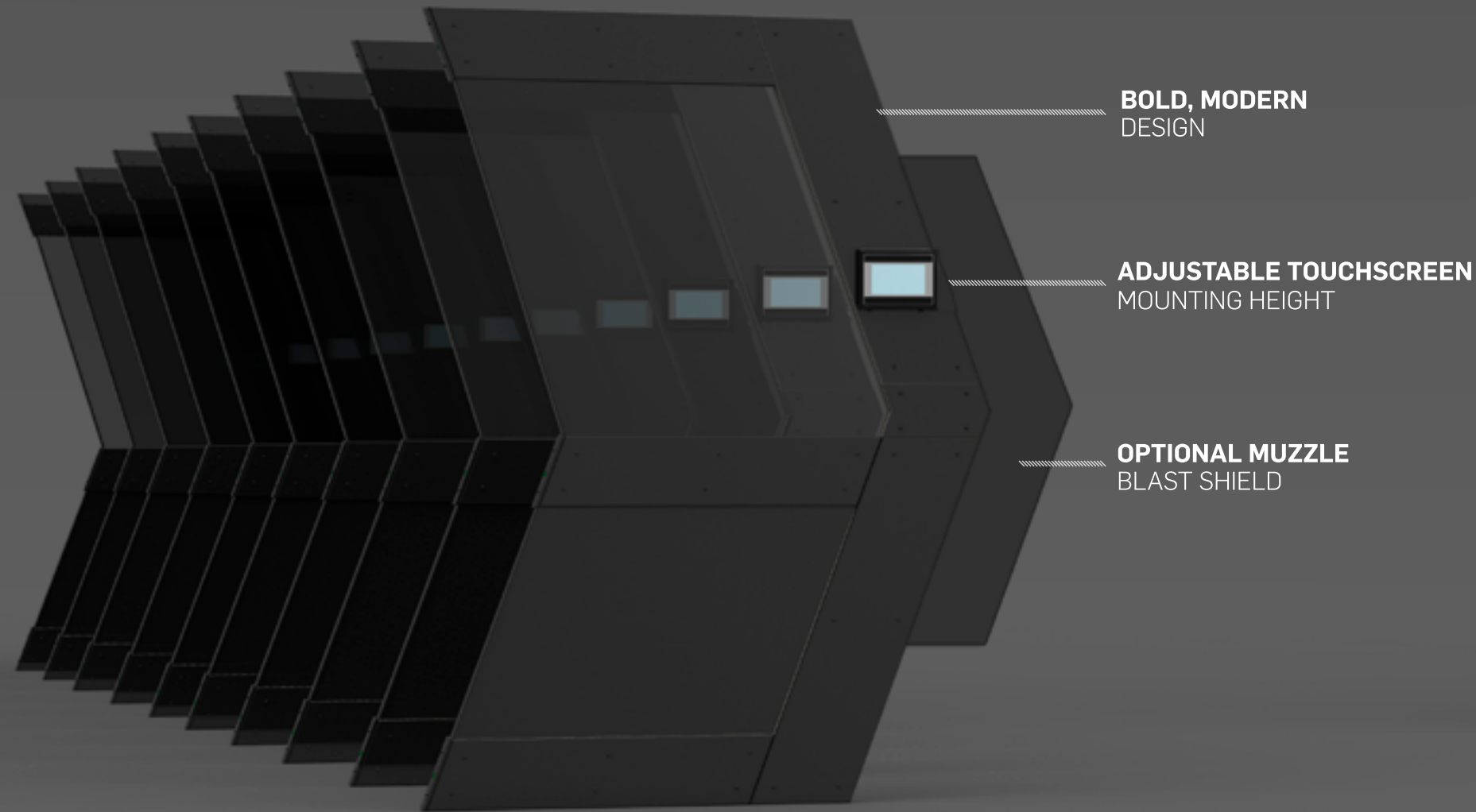
 **GROUND-MOUNTED OR INVERTED**
LATERAL-MOVING RUNNER

 **MASTER CONTROL W/ OPTIONAL**
MIRRORED WIRELESS TABLET

 **WALK, JOG, RUN & RANDOM**
VARYING SPEED MODES

 **EASY IMPLEMENTATION**
FOR ANY RANGE





THE TRUMBULL >>

From varying levels of ballistic clear-view glass and solid core privacy panels, to custom-branding colorways and beyond, the Trumbull is loaded with customizable options and standard features. Whether you make it your own or keep it simple, the Trumbull delivers a high level of both safety and style.





THE **BLACKOUT**>>



RETENTION DESIGN
PREVENTS SLUMPING

TELESCOPIC SIDE WALLS
ADJUST TO ANY RANGE SIZE

BEEFY STEEL DECK
W/ THICKNESS OPTIONS

FITS SNUG WITH
SIDE WALLS

RECYCLED CHOPPED
RUBBER MEDIA

THE BLACKOUT >>

Our chopped-rubber bullet trap offers a cost-conscious design. While spent lead must be mined periodically based on shooting volume to ensure a safe training environment, minimized bullet breakup eases the lead recovery process. Additionally, the Blackout is treated with a fire-resistant coating to enhance range safety.

 **COST-CONSCIOUS**
RUBBER BULLET TRAP

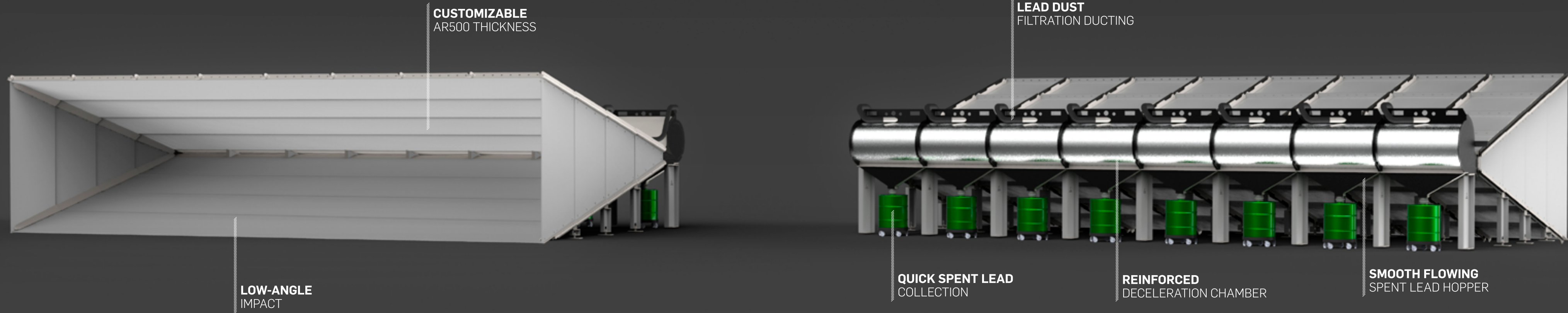
 **TAKES A WIDE ARRAY OF CALIBERS**
BUT DON'T GET CRAZY

 **ADAPTABLE FOR**
INDOOR / OUTDOOR

 **FIRE RESISTANT**
TREATED RUBBER



THE **HELIX** >>



THE HELIX >>

There's no quicker, easier way to reclaim spent lead than with our steel trap. Its low impact angle, AR500 plate construction and reinforced chamber design maximize longevity. The Helix is built to feast on a high diet of lead for years without having to count calibers.





THE **WELKIN** >>

ACOUSTIC TREATMENT
[OPTIONAL]

AR500 STEEL BASE
[STANDARD]

PLYWOOD FASCIA
[OPTIONAL]

THE WELKIN >>

Our patent-pending, streamlined baffle system lowers overall cost and provides superior protection. Whether fixed or tactical, new construction or retrofit, indoor or out, our baffle system is adaptable to any facility. What can we say, except, "you're Welkin"?



SPIRE HQ
SPRINGVILLE, UT

spire  RANGES

CONTACT @ SPIRERANGES.COM

(8 0 0) 7 6 1 - 1 2 3 1

